



INTRAVUE & PCVUE COMMUNICATION

DERNIERE MODIFICATION : 19/11/2013

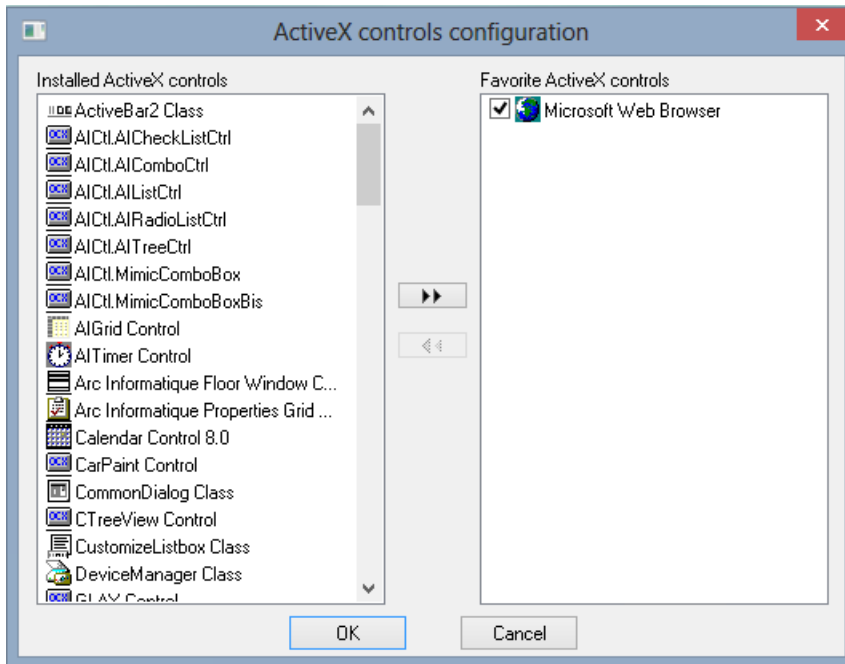
Siège social
2, avenue de la cristallerie
92310 Sèvres
Tél. : +33 1.41.14.36.00
www.arcinfo.com

Version	Auteur	Action	Re-lecteur	Date	Diffusion
1.0	ACH	Creation		20/11/2013	

1. PcVue Displaying

Add ActiveX « Microsoft Web Browser »

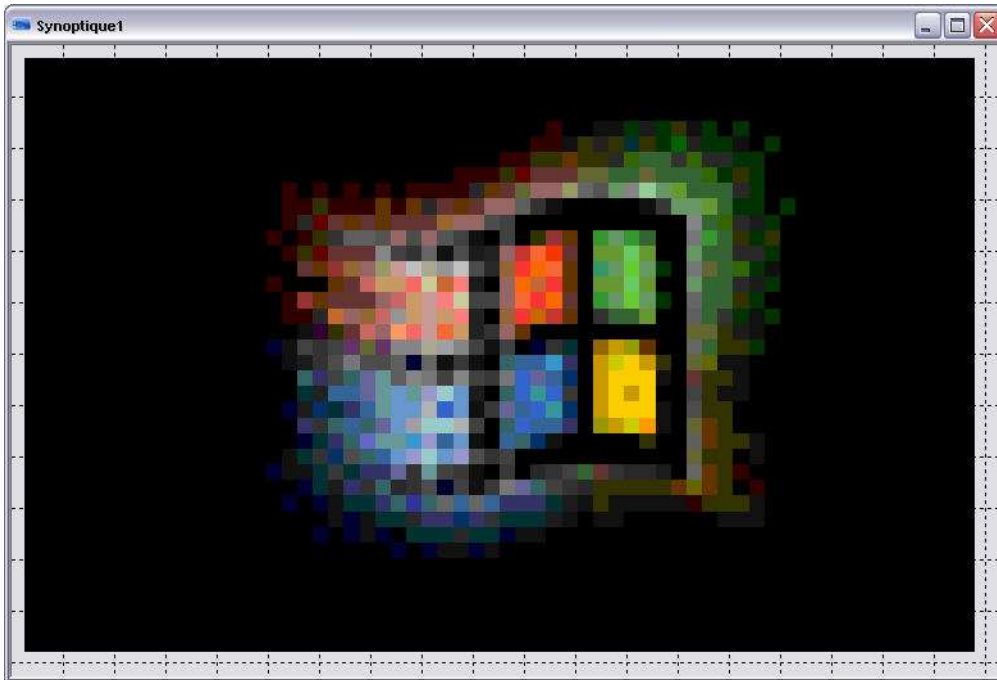
Into PcVue, select « ActiveX Controls », menu Configure>Preferences



Add « Microsoft Web Browser » to Favorite ActiveX controls.

Create a mimic with ActiveX

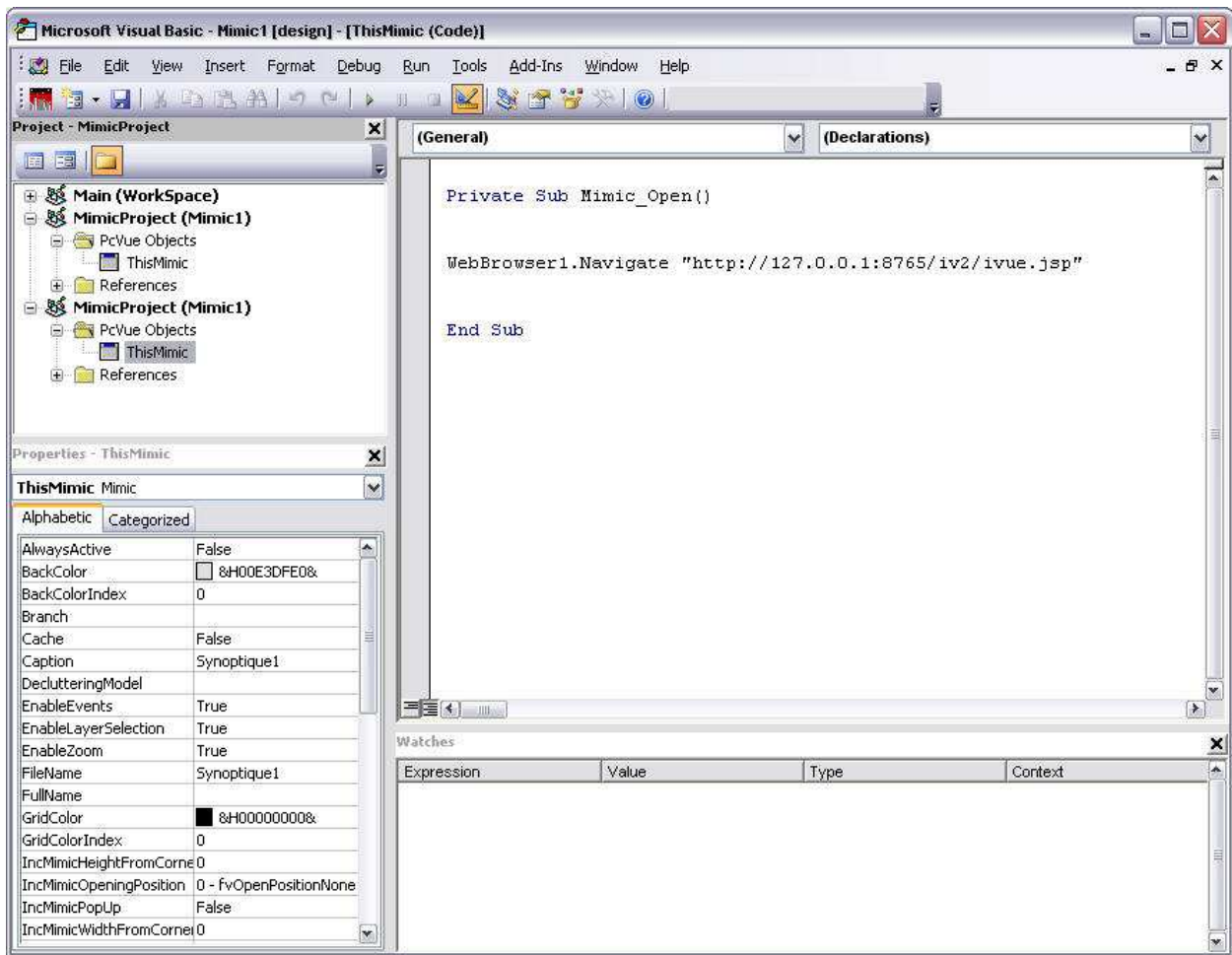
Add a new mimic and insert the ActiveX control « Microsoft Web Browser », menu Insert > Favorite ActiveX controls > Microsoft Web Browser



ActiveX Settings

1. Goto Visual Basic Editor, menu Display.
2. Select Mimic1 > PcVue Objects > ThisMimic
3. Add a function Mimic_open()
4. Insert the code

WebBrowser1.Navigate "http://127.0.0.1:8765/iv2/ivue.jsp"



5. Save the code. Close and open the mimic.

2. PcVue and IntraVue communication

1) Intravue configuration

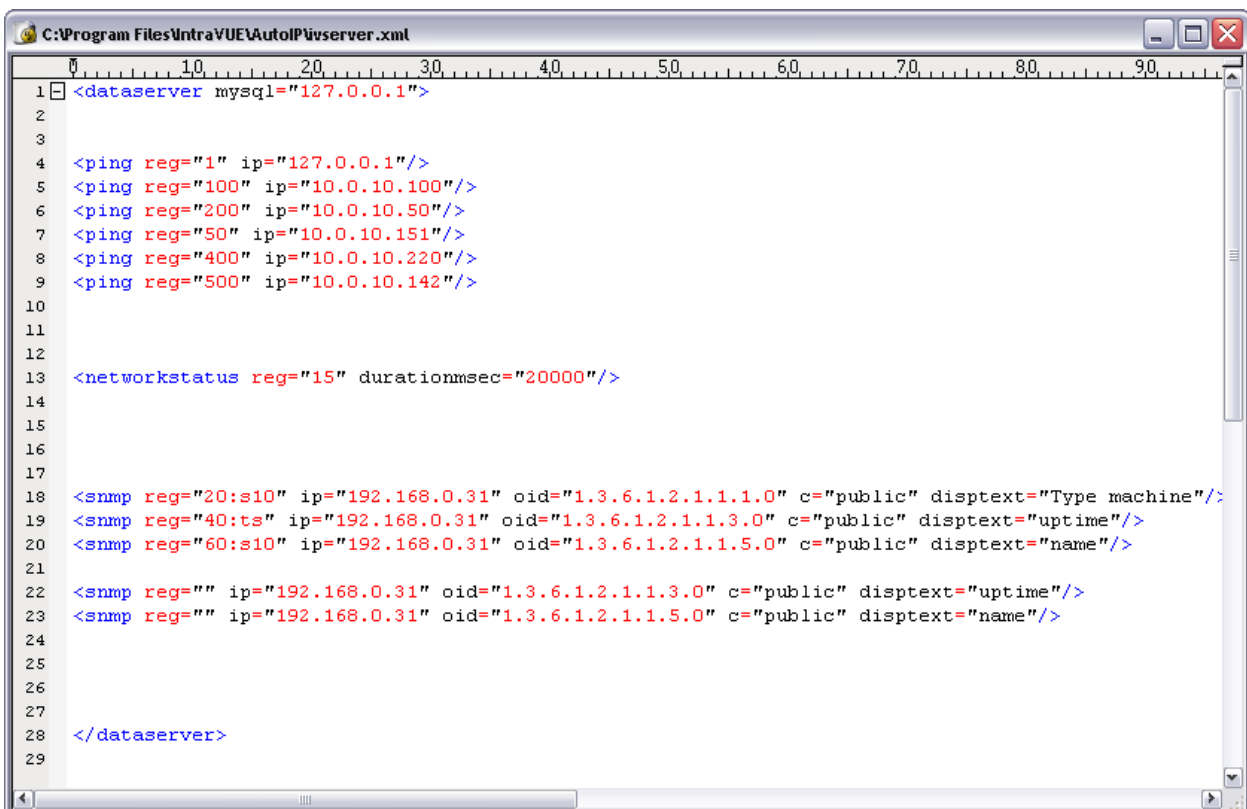
By default, IntraVUE ModBus/TCP is not activating. It is necessary to set the option to true in the ivserver.properties file.

```
modbus.service=true
```

For sharing information between IntraVue and PcVue, you must edit the ivserver.xml file located to « C:\IntraVUE\AutoIP (by default)

This file allows indicating the equipment status and the SNMP data into ModBus TCP/IP words which are available for PcVue.

File example:



```
C:\Program Files\IntraVUE\AutoIP\ivserver.xml
1 <dataserver mysql="127.0.0.1">
2
3
4 <ping reg="1" ip="127.0.0.1"/>
5 <ping reg="100" ip="10.0.10.100"/>
6 <ping reg="200" ip="10.0.10.50"/>
7 <ping reg="50" ip="10.0.10.151"/>
8 <ping reg="400" ip="10.0.10.220"/>
9 <ping reg="500" ip="10.0.10.142"/>
10
11
12
13 <networkstatus reg="15" durationmsec="20000"/>
14
15
16
17
18 <snmp reg="20:s10" ip="192.168.0.31" oid="1.3.6.1.2.1.1.1.0" c="public" disptext="Type machine"/>
19 <snmp reg="40:ts" ip="192.168.0.31" oid="1.3.6.1.2.1.1.3.0" c="public" disptext="uptime"/>
20 <snmp reg="60:s10" ip="192.168.0.31" oid="1.3.6.1.2.1.1.5.0" c="public" disptext="name"/>
21
22 <snmp reg="" ip="192.168.0.31" oid="1.3.6.1.2.1.1.3.0" c="public" disptext="uptime"/>
23 <snmp reg="" ip="192.168.0.31" oid="1.3.6.1.2.1.1.5.0" c="public" disptext="name"/>
24
25
26
27
28 </dataserver>
29
```

Warning, IntraVue is JBus equipment. First address is 0.

Each *ping* tag has two attributes:

reg: Word Address data (0 no reply, 1 OK),

ip: IP Address.

Each *networkstatus* tag has two attributes:
reg: Word Address data
durationmsec: Delay before set to 1

The events detected and reported in this register are

- Bit 0: new device joined network
- Bit 1: device disconnected
- Bit 2: device reconnected
- Bit 3: threshold exceeded

Each *snmp* tag has five attributes:

- reg**: Word Address data + Optional information type
 - :i integer 16 bits (1 word). Default.
 - :d integer 32 bits (2 words)
 - :f real 32 bits (2 words)
 - :s<number> number of word

ip: IP Address.

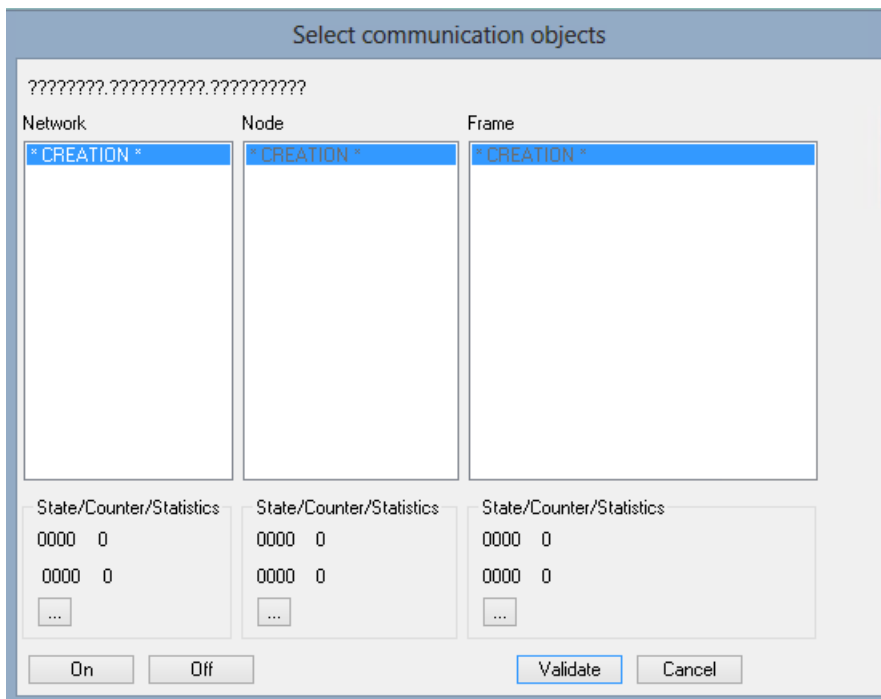
oid: Object ID.

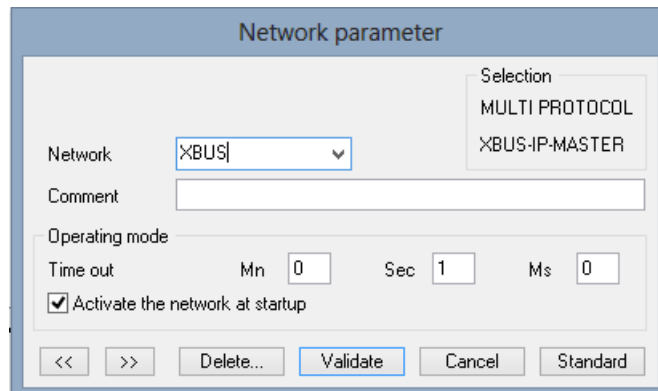
c: attribute is for the SNMP community of the device.

disptext: attribute establishes the text you would like to appear for this item in the *SNMP Data*.dialog

2) PcVue Configuration

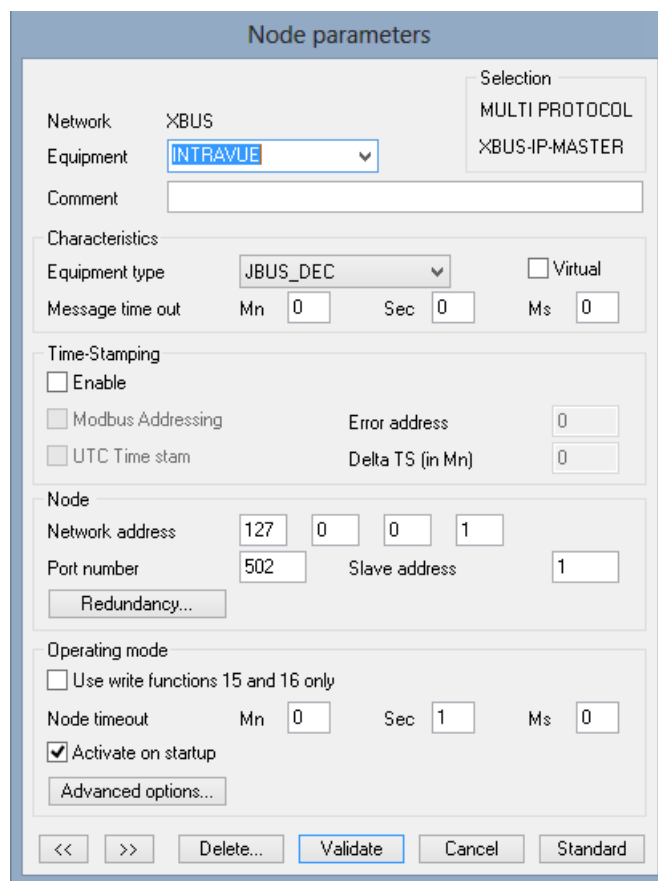
Create a new Network, menu Configure > Communication > Equipment





The 'Network parameter' dialog box is shown. It features a 'Network' dropdown menu set to 'XBUS'. To the right, a 'Selection' box contains 'MULTI PROTOCOL' and 'XBUS-IP-MASTER'. Below this is a 'Comment' text field. The 'Operating mode' section includes 'Time out' fields for Mn (0), Sec (1), and Ms (0), and a checked checkbox for 'Activate the network at startup'. At the bottom, there are navigation buttons: '<<', '>>', 'Delete...', 'Validate', 'Cancel', and 'Standard'.

Add IntraVue Node



The 'Node parameters' dialog box is shown. The 'Network' is 'XBUS' and 'Equipment' is 'INTRAVUE'. The 'Selection' box shows 'MULTI PROTOCOL' and 'XBUS-IP-MASTER'. The 'Characteristics' section has 'Equipment type' set to 'JBUS_DEC' and a 'Virtual' checkbox. 'Message time out' fields are Mn (0), Sec (0), and Ms (0). The 'Time-Stamping' section has 'Enable' unchecked, 'Modbus Addressing' unchecked, 'UTC Time stamp' unchecked, 'Error address' (0), and 'Delta TS (in Mn)' (0). The 'Node' section has 'Network address' (127, 0, 0, 1), 'Port number' (502), and 'Slave address' (1). The 'Operating mode' section has 'Use write functions 15 and 16 only' unchecked, 'Node timeout' (Mn: 0, Sec: 1, Ms: 0), and 'Activate on startup' checked. An 'Advanced options...' button is at the bottom. Navigation buttons are at the very bottom: '<<', '>>', 'Delete...', 'Validate', 'Cancel', and 'Standard'.

IP: IP address must be the IntraVue machine.
127.0.0.1 If IntraVue and PcVue are on the same machine

Add different frames

For this line: <networkstatus reg="15" durationmsec="20000" />

Frame parameters

Network: XBUS
 Equipment: INTRAVUE
 Frame: T_NETWORK_STATUS
 Selection: MULTI PROTOCOL, XBUS-IP-MASTER
 Comment:

Characteristics
 Frame format: BIT
 Access grant: Read Write
 Address: ... From: WordBit I/O LM 00015 To: WordBit I/O LM 00015

Operating mode
 Priority mode
 Cyclic access Read Write
 Scan rate: Mn 0 Sec 1 Ms 0

<< >> Delete... Validate Cancel Standard

Equipment mapping

Address	Variable	Index - (Byte offset / Bit offset)
WordBit I/O LM 00015.0	INTRAVUE.NETWORK.STATE.NEWDEVICE	0 - (0 / 0)
WordBit I/O LM 00015.1	INTRAVUE.NETWORK.STATE.DISCONNECTION	1 - (0 / 1)
WordBit I/O LM 00015.2	INTRAVUE.NETWORK.STATE.RECONNECTION	2 - (0 / 2)
WordBit I/O LM 00015.3	INTRAVUE.NETWORK.STATE.THRESHOLDS	3 - (0 / 3)
WordBit I/O LM 00015.4		4 - (0 / 4)

And for this line : `<ping reg="126" ip="192.168.1.126" />`

Frame parameters

Network: XBUS
 Equipment: INTRAVUE
 Frame: T_192_168_1_126
 Selection: MULTI PROTOCOL, XBUS-IP-MASTER
 Comment:

Characteristics
 Frame format: BIT
 Access grant: Read Write
 Address: ... From: WordBit I/O LM 00126 To: WordBit I/O LM 00126

Operating mode
 Priority mode
 Cyclic access Read Write
 Scan rate: Mn 0 Sec 1 Ms 0

<< >> Delete... Validate Cancel Standard

Equipment mapping

Address	Variable	Index - (Byte offset / Bit offset)
WordBit I/O LM 00126.0	INTRAVUE.NETWORK.STATE.192_168_1_126	0 - (0 / 0)
WordBit I/O LM 00126.1		1 - (0 / 1)
WordBit I/O LM 00126.2		2 - (0 / 2)
WordBit I/O LM 00126.3		3 - (0 / 3)

Final result :

