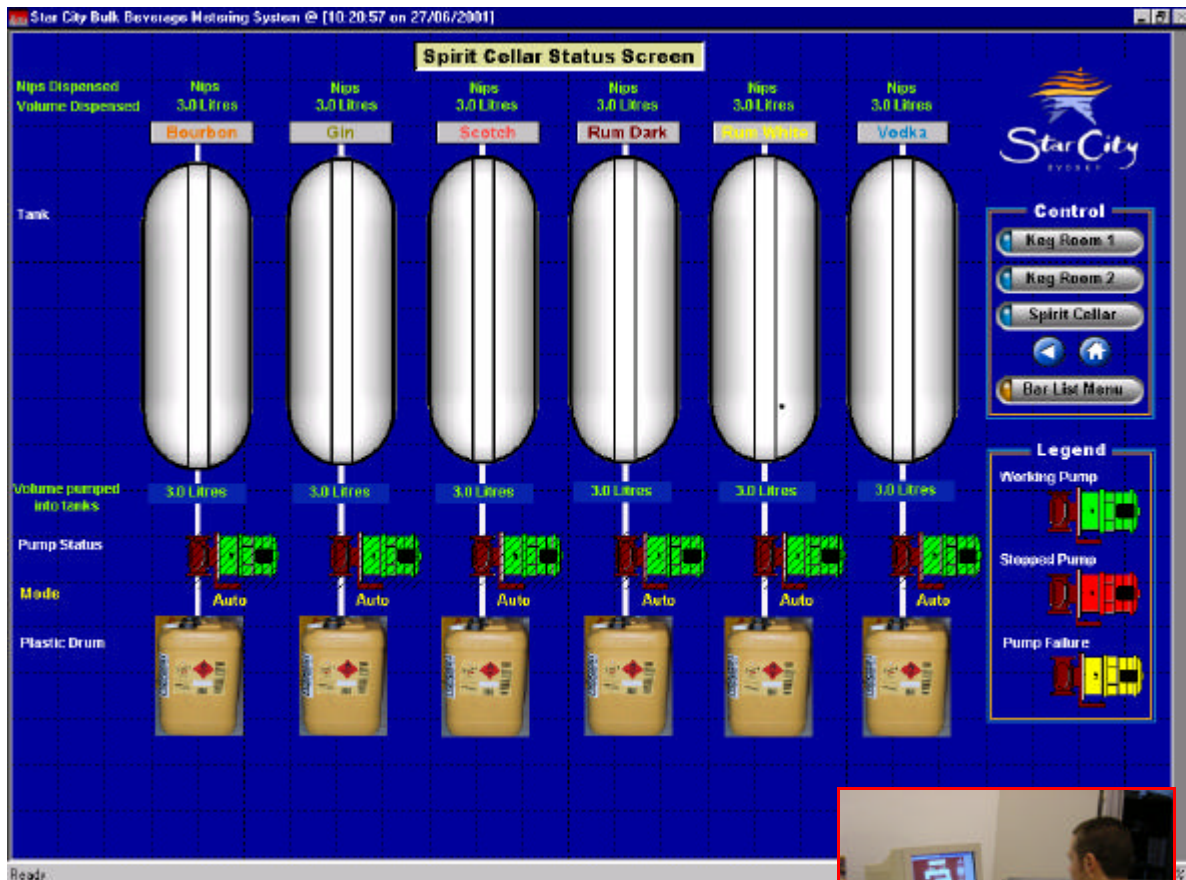


people

# Star City Casino Beverage Information System



leveraging technology



**Problem:** Star City Sydney has bulk beer and bulk spirit delivery systems to each of its beverage outlets (“bars”). There was no system in place to record the quantity of each beer or spirit dispensed at each outlet. Manual refilling of the bulk spirit containers was carried out, necessitating the shutting down of the dispensing system each time. Lifting injuries and spillage were risk factors for Star City.

**Requirement:** Star City required a system that would accurately record the volume of product from the cellars to each outlet, with the data able to be exported into a SQL database for Star City’s use. The new system will also provide automatic refilling of the bulk spirit canisters.

**Solution:** Itech has provided a data collection system for Star City networking its multiple drinks outlets which encompassed 112 beer lines and 23 spirit guns. Collected information is presented to users using a screen based display. The solution uses a web client to enable the beverage information to be displayed anywhere on the Star City intranet. The collected information is stored in the SQL Server 2000 database for historization and analysis purposes.

## Design:

- Monitoring of the spirits dispensed and spirit cellar tank levels are controlled by PLC networking & PCVUE.
- Beer dispensing is controlled using a flowmeter connected to a controller which provides a serial interface to the SCADA PC. An application, written by Itech, transfers the data into PCVue for screen display and logging.
- PCVue screens allow the monitoring and logging of every spirit and beer poured by tap location or by bulk quantities. PCVue has been configured to provide data to a SQL Server 2000 database for Star City's use.

## Itech Corporation Responsibilities

- Project Management
- Control System Design
- Display (SCADA) System Design
- Software Development
- Commissioning
- Drawing and documentation

**Project Value:** \$200,000

**Location:** Star City Casino, Sydney

**Project Manager:** Peter Jepson

**Project Engineers:** Jon-Paul Grygorcewicz, Salim Sukari

## Technology:

- Standard Programmable Logic Controller (PLC) hardware for information gathering and equipment networking.
- PCVUE32 SCADA application for information presentation which includes a HTTP server to support web clients.
- Microsoft SQL Server 2000 for database functionality.
- All application programs run under Microsoft Windows NT.

Notes: SCADA - Supervisory Control and Data Acquisition

Contact Details: Itech Corporation Pty. Ltd.,  
838-840 Princes Highway,  
Tempe, NSW 2044

Telephone: (02) 95582700

Fax: (02) 95582777